



INDUSTRIAL CAPABILITIES STATEMENT

MODULAR METAL SOLUTIONS FOR GENERATIONS

Moran Iron Works | 11739 M68/33 | Onaway, MI USA | 989.733.2011 | moraniron.com

CORE COMPETENCIES

CONTACT

Sales & Estimating
sales@moraniron.com

(989)733-2011

ABOUT

Moran Iron Works (MIW) is a dynamic fabrication facility specializing in large, modular, custom welding and industrial fabrication projects with over four decades of experience in a variety of industries including industrial, power, marine, and hydraulic structures. Our diversified portfolio and company culture of integrity creates the polished, state-of-the-art skill behind each project.

DIFFERENTIATORS

Capacity & Workforce Training

- 125,000 sq. ft. fabrication and machining facility
- Highly-trained workforce that allows quick and seamless fabrication
- Turnkey project solutions from estimating to installing

Equipment & Facilities

- Indoor overhead cranes
- CNC plasma cutting
- Advanced rolling and forming
- Robotic welding capabilities
- High-wire corridor gives access to haul large modules
- Deepwater Port allows for unlimited laydown and shipping in the Great Lakes tributaries

Quality & Safety

- CWI and CWS certifications ensuring impeccable quality
- All safety/quality personnel have average of 17 years' experience
- Each shop employee trained in PPE, Overhead Crane, Manlift Powered Industrial Trucks, Confined Space, Hazcommunication, Fall Protection, Lockout-Tag Out, and Machine Guarding

CERTIFICATIONS

American Institute of Steel Construction

- (CBR) Major Steel Bridges
- (IBR) Certified Bridge Fabricator – Intermediate
- (HYD) Hydraulic Steel Structures
- (FCE) Fracture Critical Endorsement
- (P2) Sophisticated Paint Endorsement

American Welding Society

- Certified Welding Fabricator

National Commission Certification of Crane Operators

COMPANY DATA

Year Established

1978

UDI

S89ZWMV3CM63

Cage Code

0NYK6

NAICS Codes

332312, 336611, 333611, 332313, 332311, 332410, 332470, 332710



C E R T I F I E D



STOVE DOME

Moran Iron Works was awarded the contract to fabricate, machine, paint, package, and deliver one (1) blast furnace stove dome via barge.

Customer	United States Steel
Location	Ecorse, MI
Weight	99,455 lbs
Material	A516 GR 70 Carbon Steel
Dates of Performance	Jan. 2017 - Jun. 2017

KERITE CABLE REEL

Moran Iron Works was awarded the contract to fabricate, machine, and paint one (1) 35' Kerite Cable Reel.

Customer	Marmon Utility
Location	Seymour, CT
Weight	28,200 lbs
Material	A36 Carbon Steel
Dates of Performance	May 2018 - Aug. 2018



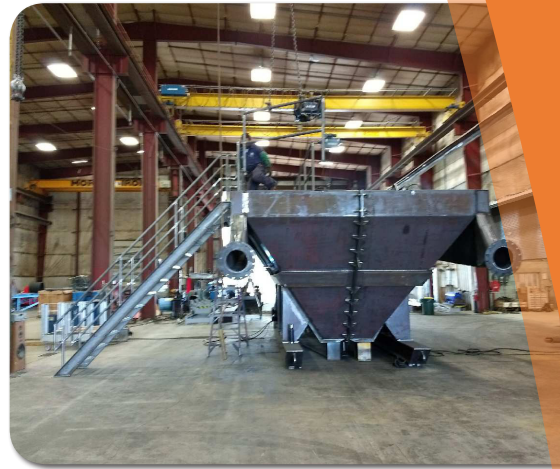
PAST PERFORMANCE



DEWATERING WHEEL AND BASE

Moran Iron Works was awarded the contract to fabricate, machine, paint, modularize, and package one (1) dewatering wheel with one (1) base.

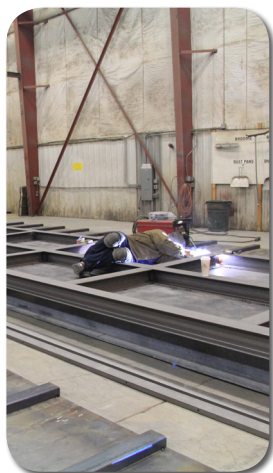
Customer	Aggregate Resources
Location	Kalamazoo, MI
Weight	51,387 lbs
Material	A516 GR 70 Carbon Steel
Dates of Performance	Base: Jun. 2017 - Oct. 2017 Wheel: Jan. 2018 - Apr. 2018



ABSORBER BOX

Moran Iron Works was awarded the contract to fabricate, machine, paint, and ship one (1) 8'x8'x40' absorber box.

Customer	Lewis Metals
Location	LaCrosse, WI
Weight	28,200 lbs
Material	A36 Carbon Steel
Dates of Performance	Apr. 2018 - May 2018



PAST PERFORMANCE