

A PUBLICATION OF  
MORAN IRON WORKS, INC.

# The Iron Press



Moran Iron Works, Inc.

P.O. Box 732 11739 M-68/33 Onaway, MI 49765 Phone: 989-733-2011 Fax: 989-733-2371

OCTOBER 2011



- Non-Destructive Testing
- Ultrasonic (UT)
- Magnetic Particle (MT)
- Liquid Penetrate (PT)
- Visual (VT)
- Certified Weld Inspection

International Testing & Inspection, LLC.

6911 Bowen Rd.  
Onaway, MI 49765

Ph: 989.733.9800  
Fax: 989.733.2371

We're on the web,  
visit us at  
[www.moraniron.com](http://www.moraniron.com)

## Update on Ductwork Fabrication Projects

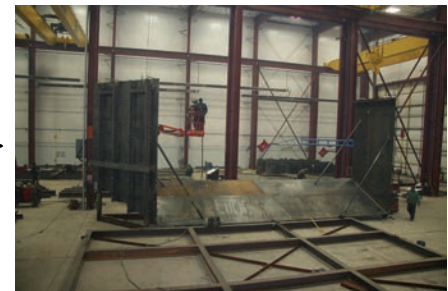
“A very fast paced Ductwork Project for one of our power plant customers is approaching the half way point. This first barge load will be carrying over a million pounds of prime product, and will arrive at our customers facility one week ahead of schedule. We achieved this from 07/25/2011 thru 10/25/2011. The second half of this project is scheduled for a 2012 delivery, with nearly the same production pace.”, states Bill Hartig Project Manager.



To the Left is the Ductwork Project Bill Hartig is working on.



To the Right is the Ductwork Project Carl Campbell is working on.



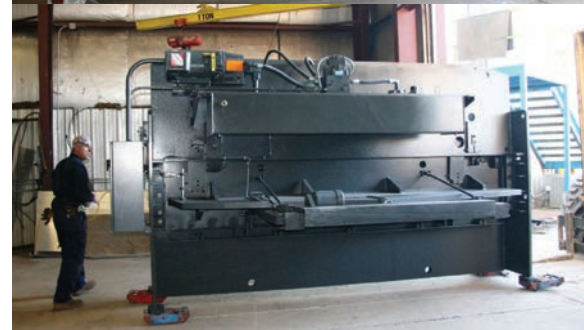
Carl Campbell, Project Manager for another Ductwork Project, reports, “Fabrication of this comprehensive Ductwork Project is nearly 33% complete, 20% of the modules have been transported to our deep water port for assembly. Due to their massive size, they must undergo final fittings, lagging and insulation at dock side. This is scheduled to begin the week of 11/21/11 and is expected to continue until the week of 5/22/12. At that point they are scheduled for barging to the customer’s facility.”

### Updating Technology- The New Hydraulic Shear

Moran Iron Works is always taking strides to remain competitive, and the first step in doing that is to make sure we have the best of the best for our employees, and so that with no hesitation we can guarantee the work of our staff is second to none.

Following that, we make sure the tools of our trade are state-of-the-art, using the newest technologies available to us.

One such advancement is the new American Made 2011 hydraulic shear that we purchased earlier this month. Not only have we enhanced our rated steel capacity to 80,000 P.S.I., changed from a mechanical system to a hydraulic one, improved the precision of the cut, but just as importantly the new shear is O.S.H.A compliant helping strengthen our Safety Network with the updated requirements.



## Employee Corner— Featuring Matt Kowalski



Moran Iron Work's strength has always been in the staff it employs and much of our personnel has been with the company from their teens to retirement.

As we expand, what we search for are young faces that show the same drive and dedication as those that made this company the success it is today. One such fresh face is Matt Kowalski. Raised in the timeless rural setting of Presque Isle, MI, Matt attended Alpena Community College to acquire his Associates Degree in Drafting/CAD.

At 21 years old, he's not yet married preferring to spend his free time with

his family in outdoor endeavors such as making fresh maple syrup, hunting and working on his winter bike project.

Matt shows great promise working side by side with the Project Managers, assisting in bringing fresh new ideas and merging them with experience and performance. We are excited about the chance to watch his progression in the years to come.

Welcome aboard Matt!

### Upcoming Events

#### FABTECH

November 14-12, 2011  
McCormick Place  
Chicago, IL  
[www.fabtechexpo.com](http://www.fabtechexpo.com)

#### Power-Gen

International  
December 13-15, 2011  
Central Halls  
Las Vegas, NV  
[www.powergen.com](http://www.powergen.com)

*If your actions inspire others  
to dream more, learn more, do  
more and become more, you  
are a leader.*

John Quincy Adams

## Improvements to the Dock Area

When Moran Iron Works first put plans into motion and began to utilize the deep water port leased from Carmeuse of Rogers City, MI, we knew that it was only the first step in meeting our shipping needs.

The existing property has been improved upon greatly to enlarge the usable lay down area and to make the property more functional for the necessary equipment's requirements.

To advance our dockside out-

put, an underground high voltage electrical system with various service panels, located throughout the property, was installed. Prior to the new system, only portable welders were being utilized. This new electrical system allows us to use numerous welding tools when modularizing the fabrications prior to barging. Once barging begins, the system is powerful enough to support tugs being plugged into it, and could even support a freighters requirements for power.



## Moran Iron Works Smallest Additions

MIW employees are proud to be part of the many enormous fabrications that are shipped out of the yard on a weekly basis, but we are excited by the tiniest of arrivals as well. MIW is proud to welcome two new additions to the MIW family. Mason, son of Welder Matt Cherrette, who arrived earlier this summer and James, son of Estimator Jill Klein, followed a few months later,

